













The City Business Houses AT CHRISTMAS.

Following is a usual account of the general impression of the business houses of the city at this season of the year. The general impression is that the season is a "good" Christmas, but as the weather at the time of inquiry was by no means propitious, it is not surprising that the business houses are not so well patronized as in previous years.

MESSRS BURKE BROTHERS, O'CONNELL STREET. This establishment, which is opposite to Daly & Company's house in O'Connell street, is conducted by a general and thoroughly business-like proprietor. The firm of Burke Brothers, established in 1840, has a long and successful history.

MESSRS BURKE BROTHERS, O'CONNELL STREET. This establishment, which is opposite to Daly & Company's house in O'Connell street, is conducted by a general and thoroughly business-like proprietor. The firm of Burke Brothers, established in 1840, has a long and successful history.

MESSRS BURKE BROTHERS, O'CONNELL STREET. This establishment, which is opposite to Daly & Company's house in O'Connell street, is conducted by a general and thoroughly business-like proprietor. The firm of Burke Brothers, established in 1840, has a long and successful history.

MESSRS BURKE BROTHERS, O'CONNELL STREET. This establishment, which is opposite to Daly & Company's house in O'Connell street, is conducted by a general and thoroughly business-like proprietor. The firm of Burke Brothers, established in 1840, has a long and successful history.

MESSRS BURKE BROTHERS, O'CONNELL STREET. This establishment, which is opposite to Daly & Company's house in O'Connell street, is conducted by a general and thoroughly business-like proprietor. The firm of Burke Brothers, established in 1840, has a long and successful history.

MESSRS BURKE BROTHERS, O'CONNELL STREET. This establishment, which is opposite to Daly & Company's house in O'Connell street, is conducted by a general and thoroughly business-like proprietor. The firm of Burke Brothers, established in 1840, has a long and successful history.

MESSRS BURKE BROTHERS, O'CONNELL STREET. This establishment, which is opposite to Daly & Company's house in O'Connell street, is conducted by a general and thoroughly business-like proprietor. The firm of Burke Brothers, established in 1840, has a long and successful history.

MR. W. BISHOP, WATERFORD. Any notice of the leading establishments of Waterford would be incomplete without mentioning the name of Mr. W. Bishop, who has been a prominent figure in the city's business life for many years.

MR. W. BISHOP, WATERFORD. Any notice of the leading establishments of Waterford would be incomplete without mentioning the name of Mr. W. Bishop, who has been a prominent figure in the city's business life for many years.

MR. W. BISHOP, WATERFORD. Any notice of the leading establishments of Waterford would be incomplete without mentioning the name of Mr. W. Bishop, who has been a prominent figure in the city's business life for many years.

MR. W. BISHOP, WATERFORD. Any notice of the leading establishments of Waterford would be incomplete without mentioning the name of Mr. W. Bishop, who has been a prominent figure in the city's business life for many years.

MR. W. BISHOP, WATERFORD. Any notice of the leading establishments of Waterford would be incomplete without mentioning the name of Mr. W. Bishop, who has been a prominent figure in the city's business life for many years.

MR. W. BISHOP, WATERFORD. Any notice of the leading establishments of Waterford would be incomplete without mentioning the name of Mr. W. Bishop, who has been a prominent figure in the city's business life for many years.

MR. W. BISHOP, WATERFORD. Any notice of the leading establishments of Waterford would be incomplete without mentioning the name of Mr. W. Bishop, who has been a prominent figure in the city's business life for many years.

MR. W. BISHOP, WATERFORD. Any notice of the leading establishments of Waterford would be incomplete without mentioning the name of Mr. W. Bishop, who has been a prominent figure in the city's business life for many years.

MR. W. BISHOP, WATERFORD. Any notice of the leading establishments of Waterford would be incomplete without mentioning the name of Mr. W. Bishop, who has been a prominent figure in the city's business life for many years.

MR. W. BISHOP, WATERFORD. Any notice of the leading establishments of Waterford would be incomplete without mentioning the name of Mr. W. Bishop, who has been a prominent figure in the city's business life for many years.

MR. W. BISHOP, WATERFORD. Any notice of the leading establishments of Waterford would be incomplete without mentioning the name of Mr. W. Bishop, who has been a prominent figure in the city's business life for many years.

MR. W. BISHOP, WATERFORD. Any notice of the leading establishments of Waterford would be incomplete without mentioning the name of Mr. W. Bishop, who has been a prominent figure in the city's business life for many years.

MR. W. BISHOP, WATERFORD. Any notice of the leading establishments of Waterford would be incomplete without mentioning the name of Mr. W. Bishop, who has been a prominent figure in the city's business life for many years.

MR. W. BISHOP, WATERFORD. Any notice of the leading establishments of Waterford would be incomplete without mentioning the name of Mr. W. Bishop, who has been a prominent figure in the city's business life for many years.

MR. W. BISHOP, WATERFORD. Any notice of the leading establishments of Waterford would be incomplete without mentioning the name of Mr. W. Bishop, who has been a prominent figure in the city's business life for many years.

MR. W. BISHOP, WATERFORD. Any notice of the leading establishments of Waterford would be incomplete without mentioning the name of Mr. W. Bishop, who has been a prominent figure in the city's business life for many years.

MR. W. BISHOP, WATERFORD. Any notice of the leading establishments of Waterford would be incomplete without mentioning the name of Mr. W. Bishop, who has been a prominent figure in the city's business life for many years.

MR. W. BISHOP, WATERFORD. Any notice of the leading establishments of Waterford would be incomplete without mentioning the name of Mr. W. Bishop, who has been a prominent figure in the city's business life for many years.

MR. W. BISHOP, WATERFORD. Any notice of the leading establishments of Waterford would be incomplete without mentioning the name of Mr. W. Bishop, who has been a prominent figure in the city's business life for many years.

MR. W. BISHOP, WATERFORD. Any notice of the leading establishments of Waterford would be incomplete without mentioning the name of Mr. W. Bishop, who has been a prominent figure in the city's business life for many years.

MR. W. BISHOP, WATERFORD. Any notice of the leading establishments of Waterford would be incomplete without mentioning the name of Mr. W. Bishop, who has been a prominent figure in the city's business life for many years.

MR. W. BISHOP, WATERFORD. Any notice of the leading establishments of Waterford would be incomplete without mentioning the name of Mr. W. Bishop, who has been a prominent figure in the city's business life for many years.

MR. W. BISHOP, WATERFORD. Any notice of the leading establishments of Waterford would be incomplete without mentioning the name of Mr. W. Bishop, who has been a prominent figure in the city's business life for many years.

MR. W. BISHOP, WATERFORD. Any notice of the leading establishments of Waterford would be incomplete without mentioning the name of Mr. W. Bishop, who has been a prominent figure in the city's business life for many years.

MR. W. BISHOP, WATERFORD. Any notice of the leading establishments of Waterford would be incomplete without mentioning the name of Mr. W. Bishop, who has been a prominent figure in the city's business life for many years.

MR. W. BISHOP, WATERFORD. Any notice of the leading establishments of Waterford would be incomplete without mentioning the name of Mr. W. Bishop, who has been a prominent figure in the city's business life for many years.

MR. W. BISHOP, WATERFORD. Any notice of the leading establishments of Waterford would be incomplete without mentioning the name of Mr. W. Bishop, who has been a prominent figure in the city's business life for many years.

MR. W. BISHOP, WATERFORD. Any notice of the leading establishments of Waterford would be incomplete without mentioning the name of Mr. W. Bishop, who has been a prominent figure in the city's business life for many years.

MR. W. BISHOP, WATERFORD. Any notice of the leading establishments of Waterford would be incomplete without mentioning the name of Mr. W. Bishop, who has been a prominent figure in the city's business life for many years.

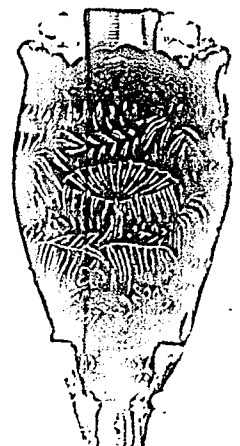
MR. W. BISHOP, WATERFORD. Any notice of the leading establishments of Waterford would be incomplete without mentioning the name of Mr. W. Bishop, who has been a prominent figure in the city's business life for many years.

MR. W. BISHOP, WATERFORD. Any notice of the leading establishments of Waterford would be incomplete without mentioning the name of Mr. W. Bishop, who has been a prominent figure in the city's business life for many years.

MR. W. BISHOP, WATERFORD. Any notice of the leading establishments of Waterford would be incomplete without mentioning the name of Mr. W. Bishop, who has been a prominent figure in the city's business life for many years.

INCANDESCENT GAS LIGHT. A PROMINENT INVENTION. WELSCH PATENTS. THE FIRST AND ONLY SYSTEM OF INCANDESCENT GAS LIGHTING THAT HAS MET WITH ANY SUCCESS.

60% Saving in Gas Bills. The "C" Burner, 6s 6d. The "C" By-pass Burner, 7s 6d. The New Gas Burner, 5s 6d.



60% Saving in Gas Bills. The most economical, The most healthy, The most brilliant, The cleanest Gas.

Can be obtained from all Gas Companies, Plumbers and Gasfitters throughout the Country, or from Wholesale Agent - W. CURTIS & SONS, 13 & 20, ABBEY STREET, DUBLIN.

The Irish Incandescent Gas Light Co., Ltd., HEAD OFFICE - 62, GRAFTON STREET, DUBLIN. BRANCH OFFICE - 76, RAYMOND AVENUE, BELFAST. GEORGE'S STREET, COBK.

Cigars for Christmas Presents.

EVERY SMOOKER HIS OWN IMPORTER. MARTIN BROS. Cigars Specialists, GUERNSEY. A COMPARISON: BORNED CIGARS. BRAND SELECTED. MARTIN BROS. PRICE per 100. WATERFORD PRICE per 100 delivered, 12/6 18/6.

MARTIN BROS., CIGAR SPECIALISTS, GUERNSEY. For all particulars apply to the following Agents: WATERFORD: Messrs. Isaac Thompson. DUBLIN: Messrs. J. & J. GARDNER.

SUN Insurance Office. FOUNDED 1710. Capital entered in 1896 - £250,000.

What is DOLORFUGE? Vegetable Extract for the CURE of TOOTHACHE AND NEURALGIA. GUARANTEED MEDICAL BARK. WATERFORD, THAMES, AND ESTD.

Guernsey and Waterford. "Oh, yes! I buy my Cigars in Guernsey, and pay the duty myself (than buy in Waterford)." WHAT A MISTAKE!

Guernsey Prices, including Duty. Bolivar Cigars... 29/6 100. P. M. Doyle's price... 28/6 100. Flor de Ombra Cigars... 30/2 100.

TEA. We purchase, at the lowest point of the market, the finest growths from the best Indian and Ceylon Gardens; this enables us always to offer exceptional value, both for liquor and appearance.

Ogilvie & Moore, Limited, Warron's Place, CORK. CONGREVE'S BALSAMIC ELIXIR. THE GRAND OLD REMEDY FOR CHEST DISEASES.

MATE or PARAGUAY TEA. The only Tea Free from Tannin. No Astringent. FIFTY-FIVE MILLIONS of the Best Healthy People in the World Drink MATE TEA.

SPLENDID FOR THE VOICE AND A PREVENTATIVE OF COUGH IN BRONCHITIS AND ALL AFFECTIONS OF THE THROAT. WARM AND COMFORTING AND VERY PLEASANT.

CONSUMPTION. THE GREAT CURE FOR BRONCHITIS AND ALL AFFECTIONS OF THE THROAT.

CHEROKEE PLUG. A Perfect Treat. SPEARMAN'S SERIES. MORRISSEY'S HOTEL, CORK. J. R. O'DONOGHUE, Proprietor.

BARRINGTON'S SOAPS. BEST & LAST LONGEST.

CLARKE'S THUNDER CLOUDS. Finest Tobacco in the World.

CLARKE'S FAMOUS IRISH ROLL.

CLARKE'S THUNDER CLOUDS. Finest Tobacco in the World.

CLARKE'S HIGH TOAST SNUFF.

CLARKE'S THUNDER CLOUDS. Finest Tobacco in the World.

CLARKE'S HIGH TOAST SNUFF.

CLARKE'S THUNDER CLOUDS. Finest Tobacco in the World.

CLARKE'S HIGH TOAST SNUFF.

CLARKE'S THUNDER CLOUDS. Finest Tobacco in the World.







Mr John Redmond

Admiral James Kitchin

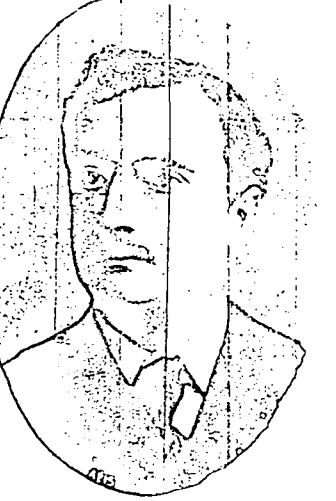
WATERFORD WINS AGAIN

The National and Literary Club

The Temperance Hall, Waterford

The Catholic Young Men's Society, Waterford

The Chamber of Commerce, Waterford



WATERFORD WINS AGAIN. The Waterford crew, consisting of...

The National and Literary Club. The club has been organized...



The Temperance Hall, Waterford. Originally a building...



The Paddy Institute

M. Antonio Cadogan

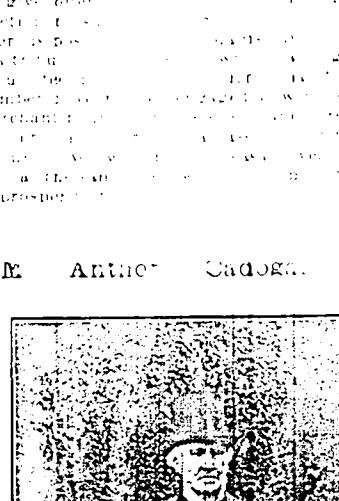
The Catholic Young Men's Society, Waterford

The Chamber of Commerce, Waterford

The Chamber of Commerce, Waterford

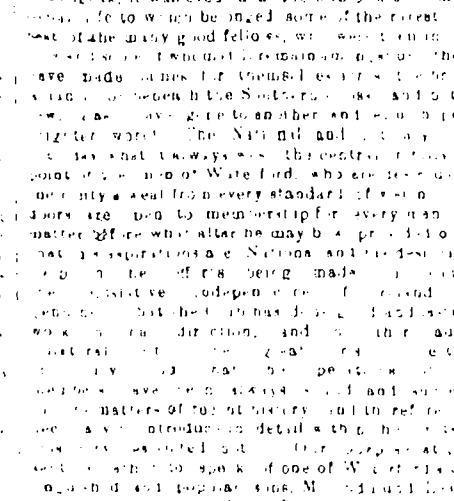
The Chamber of Commerce, Waterford

The Chamber of Commerce, Waterford

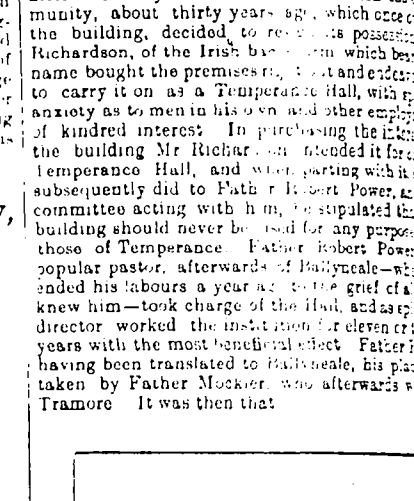


The Catholic Young Men's Society, Waterford. The society...

The Chamber of Commerce, Waterford. The chamber...



The Chamber of Commerce, Waterford. The chamber...



MEMBER OF PARLIAMENT FOR WATERFORD. It is a pleasure...

MEMBER OF PARLIAMENT FOR WATERFORD. It is a pleasure...

MEMBER OF PARLIAMENT FOR WATERFORD. It is a pleasure...

MEMBER OF PARLIAMENT FOR WATERFORD. It is a pleasure...

MEMBER OF PARLIAMENT FOR WATERFORD. It is a pleasure...

MEMBER OF PARLIAMENT FOR WATERFORD. It is a pleasure...

MEMBER OF PARLIAMENT FOR WATERFORD. It is a pleasure...

MEMBER OF PARLIAMENT FOR WATERFORD. It is a pleasure...

MEMBER OF PARLIAMENT FOR WATERFORD. It is a pleasure...

MEMBER OF PARLIAMENT FOR WATERFORD. It is a pleasure...

MEMBER OF PARLIAMENT FOR WATERFORD. It is a pleasure...

MEMBER OF PARLIAMENT FOR WATERFORD. It is a pleasure...

MEMBER OF PARLIAMENT FOR WATERFORD. It is a pleasure...

MEMBER OF PARLIAMENT FOR WATERFORD. It is a pleasure...

MEMBER OF PARLIAMENT FOR WATERFORD. It is a pleasure...

MEMBER OF PARLIAMENT FOR WATERFORD. It is a pleasure...

MEMBER OF PARLIAMENT FOR WATERFORD. It is a pleasure...

MEMBER OF PARLIAMENT FOR WATERFORD. It is a pleasure...

MEMBER OF PARLIAMENT FOR WATERFORD. It is a pleasure...

MEMBER OF PARLIAMENT FOR WATERFORD. It is a pleasure...

MEMBER OF PARLIAMENT FOR WATERFORD. It is a pleasure...

MEMBER OF PARLIAMENT FOR WATERFORD. It is a pleasure...

MEMBER OF PARLIAMENT FOR WATERFORD. It is a pleasure...

MEMBER OF PARLIAMENT FOR WATERFORD. It is a pleasure...

MEMBER OF PARLIAMENT FOR WATERFORD. It is a pleasure...

MEMBER OF PARLIAMENT FOR WATERFORD. It is a pleasure...

MEMBER OF PARLIAMENT FOR WATERFORD. It is a pleasure...

MEMBER OF PARLIAMENT FOR WATERFORD. It is a pleasure...

MEMBER OF PARLIAMENT FOR WATERFORD. It is a pleasure...

MEMBER OF PARLIAMENT FOR WATERFORD. It is a pleasure...

MEMBER OF PARLIAMENT FOR WATERFORD. It is a pleasure...

MEMBER OF PARLIAMENT FOR WATERFORD. It is a pleasure...

MEMBER OF PARLIAMENT FOR WATERFORD. It is a pleasure...

MEMBER OF PARLIAMENT FOR WATERFORD. It is a pleasure...

MEMBER OF PARLIAMENT FOR WATERFORD. It is a pleasure...

MEMBER OF PARLIAMENT FOR WATERFORD. It is a pleasure...

MEMBER OF PARLIAMENT FOR WATERFORD. It is a pleasure...

MEMBER OF PARLIAMENT FOR WATERFORD. It is a pleasure...

MEMBER OF PARLIAMENT FOR WATERFORD. It is a pleasure...

MEMBER OF PARLIAMENT FOR WATERFORD. It is a pleasure...

MEMBER OF PARLIAMENT FOR WATERFORD. It is a pleasure...

MEMBER OF PARLIAMENT FOR WATERFORD. It is a pleasure...



THE FAITHLEGG

And his prodigious Mr. Power, being of the...
And his prodigious Mr. Power, being of the...
And his prodigious Mr. Power, being of the...

BY HARLEY B. BARRETT

In days like the present when we hear continually...
In days like the present when we hear continually...
In days like the present when we hear continually...

THE FAITHLEGG

And his prodigious Mr. Power, being of the...
And his prodigious Mr. Power, being of the...
And his prodigious Mr. Power, being of the...

WATERFORD

On the 19th inst. the following interesting sketch of county and...
On the 19th inst. the following interesting sketch of county and...
On the 19th inst. the following interesting sketch of county and...

WATERFORD

On the 19th inst. the following interesting sketch of county and...
On the 19th inst. the following interesting sketch of county and...
On the 19th inst. the following interesting sketch of county and...

WATERFORD

On the 19th inst. the following interesting sketch of county and...
On the 19th inst. the following interesting sketch of county and...
On the 19th inst. the following interesting sketch of county and...

WATERFORD

On the 19th inst. the following interesting sketch of county and...
On the 19th inst. the following interesting sketch of county and...
On the 19th inst. the following interesting sketch of county and...

WATERFORD

On the 19th inst. the following interesting sketch of county and...
On the 19th inst. the following interesting sketch of county and...
On the 19th inst. the following interesting sketch of county and...

WATERFORD

On the 19th inst. the following interesting sketch of county and...
On the 19th inst. the following interesting sketch of county and...
On the 19th inst. the following interesting sketch of county and...

WATERFORD

On the 19th inst. the following interesting sketch of county and...
On the 19th inst. the following interesting sketch of county and...
On the 19th inst. the following interesting sketch of county and...

WATERFORD

On the 19th inst. the following interesting sketch of county and...
On the 19th inst. the following interesting sketch of county and...
On the 19th inst. the following interesting sketch of county and...

WATERFORD

On the 19th inst. the following interesting sketch of county and...
On the 19th inst. the following interesting sketch of county and...
On the 19th inst. the following interesting sketch of county and...

WATERFORD

On the 19th inst. the following interesting sketch of county and...
On the 19th inst. the following interesting sketch of county and...
On the 19th inst. the following interesting sketch of county and...

WATERFORD

On the 19th inst. the following interesting sketch of county and...
On the 19th inst. the following interesting sketch of county and...
On the 19th inst. the following interesting sketch of county and...

WATERFORD

On the 19th inst. the following interesting sketch of county and...
On the 19th inst. the following interesting sketch of county and...
On the 19th inst. the following interesting sketch of county and...

WATERFORD

On the 19th inst. the following interesting sketch of county and...
On the 19th inst. the following interesting sketch of county and...
On the 19th inst. the following interesting sketch of county and...

WATERFORD

On the 19th inst. the following interesting sketch of county and...
On the 19th inst. the following interesting sketch of county and...
On the 19th inst. the following interesting sketch of county and...







CHOICE AND SEASONABLE PRESENTS

DELICIOUS MAZAWATTEE TEAS

IN

XMAS ROSE BOXES AND PRESENTATION TINS!

For the Xmas and New Year Season, these Delicious Teas can be obtained packed in highly-artistic Christmas Rose Boxes, each containing 3lb. of Mazawattee: or in specially-designed and handsomely-decorated 1-lb., 3-lb., and 10-lb tins.

Sole Agents for the City and County of Waterford ROBERT & MERRY & CO., 5 & 6, The Mall, WATERFORD, And Dealers at Dungarvan and New Park.

A CHOICE, ACCEPTABLE, AND USEFUL PRESENT.

Interesting Lecture in the Town Hall

THE ANTIQUE VESTMENTS OF WATERFORD.

On Friday evening last Mr M J C Buckley, a well-known and distinguished antiquarian, of Bruges, Belgium, delivered a lecture in the Large Room of the Town Hall on "The Art of Embroidery and Weaving," as illustrated by the Antique Vestments of Waterford, many of which were exhibited in the room. We regret to say that there were not more than thirty persons present, and we can only say that those who failed to attend missed a rare treat. The Most Rev Dr Sheehan, Lord Bishop of the Diocese, presided.

His Lordship, in introducing the lecturer, said he regretted that there was not a much larger audience to listen to the interesting lecture which he had no doubt would be given that evening. The lecturer was a gentleman whose name was already very well known not merely in Ireland, but in many other countries outside for his knowledge of the subject about which he was to speak. That subject, too, was one possessed of a peculiar interest for Waterford people, who had in their possession a number of ecclesiastical vestments, reaching back in their history, for some centuries, and whether we considered them in relation to their history or in relation to the skill which they exhibited, he believed that those who were best capable of pronouncing judgment were agreed that those vestments are of very considerable interest to all those who are lovers of ecclesiastical art as well as of the art of ecclesiastical embroidery in particular. The lecturer possessed a knowledge on this subject, which his Lordship believed was unusual, and that the lecture would be the pleasure of listening to him would express that the few sentences which he would express might give an impetus to the growing feeling in Ireland should possess not only in her ecclesiastical edifices but also in her hands throughout the land specimens of art which have become known and thoroughly enlightened in all the surroundings of art workmanship. The art of depicting, or working in gold and silver, flowers, fruits, human and animal figures, and other designs on the dresses of the clergy, and on the vestments of the clergy, is a branch of art which has been known and practised since the earliest times. The designs on the dresses of the clergy, and on the vestments of the clergy, are of various kinds, and are of various dates. Some of the most beautiful examples of this art are the vestments of the Cathedral of St Paul, at London, in the year 1250. These vestments were made by the Jewish historian, and are of the most beautiful workmanship. The lecturer will just cite the names of the various vestments, and will just cite the names of the various vestments, and will just cite the names of the various vestments.

Now if we descend to more recent times we find that the art of embroidery, as we have seen it in the vestments of the Cathedral of St Paul, at London, in the year 1250, has been carried on in various parts of the world. The art of embroidery, as we have seen it in the vestments of the Cathedral of St Paul, at London, in the year 1250, has been carried on in various parts of the world. The art of embroidery, as we have seen it in the vestments of the Cathedral of St Paul, at London, in the year 1250, has been carried on in various parts of the world.

of the tissue, so as to produce various designs, and was so called from the comb which was used in working them. The cut silk work was the same as is now called "Applique" and was much used for banners and knights' surcoats. It was also employed for faces, as you may see in the beautiful modern stole, worked by my Belgian artist. If we now examine our four copes we find that all the work is "Opus plurimum." Three of the copes I consider as having been made in Flanders. In the Cathedral of St Saviour, at Bruges, we have two copes of precisely the same character and style of work. Large mercantile relations existed between Waterford and Flanders, on account of the staple trade in Irish wool, which was woven by the Flemings. That of the three copes may probably have come from the old "Cite of Bruges" or Bruges.

The "rounds of the cope are of Genoese velvet. The "crown" or welt is of silk as in the velvet still worn by Lyons, Vienna and Genoa for ecclesiastical use. We find such stuff mentioned in an inventory of Haconbe Church, A.D. 1568, which speaks of "the white velvet of Bruges attire." And again in 1520, York Cathedral possessed a "vestment of Bruges," and a cross of green satin of Bruges. Now I consider that these copes belong to the latter part of the fifteenth century. The grounds are woven with pomegranate flowers. These pomegranate flowers were much used in Flemish work, as they are copied from Spanish stuffs, in which this flower figures perhaps as an emblem of the Conquest of Granada, by Isabella, who was so popular in Spain, as well as in Flanders, which was also one of the Spanish allies.

In the copes you will notice that there is a very beautiful detail introduced into the workmanship of the "Tabernacle" work enclosing the figures of saints. The work is of the gold and silver, and is of the most beautiful workmanship. The work is of the gold and silver, and is of the most beautiful workmanship. The work is of the gold and silver, and is of the most beautiful workmanship.

These copes which I have been very much surprised to find in the Cathedral of St Paul, at London, in the year 1250, are of the most beautiful workmanship. The work is of the gold and silver, and is of the most beautiful workmanship. The work is of the gold and silver, and is of the most beautiful workmanship.

vestments at Florence still in the church of San Giovanni, which cost 25 years of labour to finish in 1497. And in this land too there were famous workers, as we see in the splendid execution of the famed Silen cope and the magnificent one formerly in Westminster Abbey, and now in Stowmarket College, as well as in Ireland, the home of the rarest gold "filigree" or "intrelice," as we see in the Limerick mitre, and in Waterford vestments. The English ladies were among the most famous workers of medieval times, among others I may mention the name of Holland wife, maid of Maud, wife of David of Scotland in 1180, who was renowned for her skill. And now we see more fair and noble-minded Irish maidens rival their time of old for their skill. The glory and beauty of the dear old churches, of the venerable shrines of this land is once more revived, and many earnest minds are striving to render them beautiful, and fair, and fit for all the aesthetic feelings that are attached to the most hallowed associations of the human soul. In those workers in this fair land be endowed with much knowledge and skill, and may their labors give us things of beauty to be joys for ever.

The remainder of the lecture, which contains references to the history of Waterford vestments, was found in our next issue, together with some very interesting speeches on the subject of Home Trade.

A Choice, Acceptable and Useful Present DELICIOUS MAZAWATTEE TEA In 3-lb Xmas Boxes And handsomely-decorated 1-lb., 3-lb., 6-lb & 10-lb Tins Sole Agents for City and County of Waterford ROBERT & MERRY & CO.

KEATING'S WIDOW WELCH'S FEMALE PILLS have a reputation of over 100 Years KEATING'S WIDOW WELCH'S FEMALE PILLS are the acknowledged remedy for Female complaints KEATING'S WIDOW WELCH'S FEMALE PILLS contain no irritant drug, and have the approval of the Medical Profession KEATING'S WIDOW WELCH'S FEMALE PILLS are wrapped in White Paper, and have the name "Keating's" on the Government Stamp. No others are genuine.

KEATING'S COUGH LOZENGES KEATING'S COUGH LOZENGES KEATING'S COUGH LOZENGES KEATING'S COUGH LOZENGES KEATING'S COUGH LOZENGES KEATING'S COUGH LOZENGES KEATING'S COUGH LOZENGES KEATING'S COUGH LOZENGES KEATING'S COUGH LOZENGES KEATING'S COUGH LOZENGES

QUAY, Waterford. Varied and choice Display of Useful Articles suitable for SEASON'S GIFTS. INCLUDING: Writing Desks, Work Boxes, Purcases, Hand Bags, Dressing Cases and Travelling Wraps, Fur Boas and Table Necklets, Seal Capes and Coats, Eider-Down Quilts and Dressing Gowns, Children's Pelisses and Bonnets. Electro Plated Ware Japanese Screens and Fancy Tables, Reading Lamps, Hall Lamps, etc., etc.

P. TOBIN & SONS. THE BEST.

NOTICE TO FARMERS. As I understand statements have been made and circulated that this House had ceased to take in Pigs direct from the Farmers, I beg to say that such statements are entirely false. My gates have not been closed, and I am prepared to receive, as usual, suitable Pigs, and to pay the Highest Market Price for them. Esqr. of J. J. RICHARDSON, Queen's Door, Waterford.

MRS. FERDINAND COTTULLI. Expert to amuse that she gives Lessons on Piano and Violin, and also TEACHES FRENCH. CERTIFICATE FROM TRINITY COLLEGE, LONDON. For Terms and full particulars apply at 5, South Parade, Waterford. HONEY. The Most Purest Private Loan and Discount Office. 25, UPPER O'CONNELL STREET, LIMERICK. ADVANCES: Money to Respectable Applicants. Shopkeepers, Farmers, and Respectable Homeholders on their own notes of hand without additional security in any part of Ireland on short notice. Interest moderate, and repayments can be so arranged as to suit convenience of borrowers. Money applied elsewhere, please specify our terms. A prospectus containing all necessary information, will be forwarded to you on application to J. BARNETT, Manager.

KELLY'S STOUT. THE BEST.

NOTICE. MAURICE QUINLAN. Esqr. to announce to his Friends and the Public generally that he has opened a Victualling Establishment at 27, GREAT GEORGE'S STREET, WATERFORD. And is now prepared to supply FIRST-CLASS BEEF, MUTTON (Lamb, Veal and Pork when in season) AT REASONABLE PRICES. A TRIAL SOLICITED. For Particulars and Prices apply to J. BARNETT, Manager, 12, O'Connell-Street, Waterford.

GARRETT'S HERBINE. A purely vegetable preparation. For the cure of all kinds of Rheumatism, Gout, Neuralgia, Sciatica, Headache, Toothache, Stomachic Pain, and all other Painful Affections. It is a powerful and safe remedy, and is sold in all the principal Dispensaries and Chemists. WATERFORD—GEORGE WHITE & SONS. 12, O'Connell-Street, Waterford. LAW PRINTING.—We are prepared to supply all legal forms at prices as cheap as any other printer in the city. For particulars apply to J. BARNETT, Manager, 12, O'Connell-Street, Waterford.



Henry, Third Marquis of Waterford.

Henry, Third Marquis of Waterford, was a distinguished statesman and soldier. He was born in 1752 and died in 1838. He was a member of the House of Commons and the House of Lords. He was also a general in the army.

READING INCIDENTS IN AN EXCITING CAREER.

The reading of the will of the late Marquis of Waterford was a most interesting event. It took place in the presence of a large number of witnesses. The will was found to be a most liberal one.

ON THE TRAIL IN THE HUNTING FIELD.

The hunting season is now in full swing. The Marquis of Waterford is a most successful sportsman. He has been out on several occasions and has secured a large number of game.

THE MARRIAGE OF THE MARQUESS OF WATERFORD.

The marriage of the Marquis of Waterford to the daughter of the Duke of Devonshire was a most celebrated event. It took place in the presence of a large number of guests.

THE MARRIAGE OF THE MARQUESS OF WATERFORD.

The marriage of the Marquis of Waterford to the daughter of the Duke of Devonshire was a most celebrated event. It took place in the presence of a large number of guests.

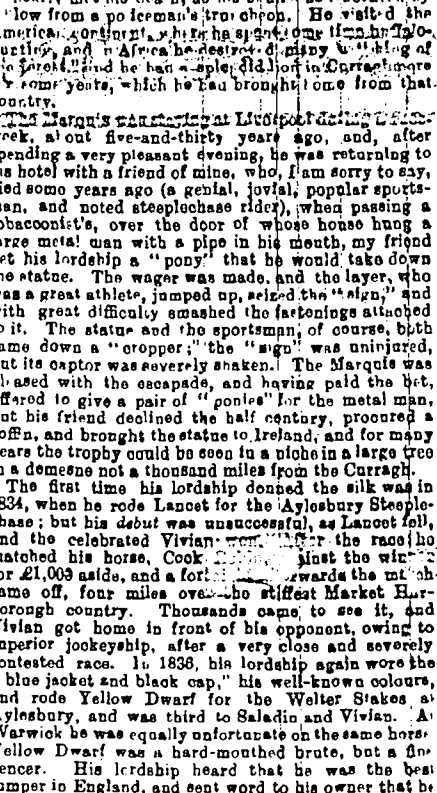
THE MARRIAGE OF THE MARQUESS OF WATERFORD.

The marriage of the Marquis of Waterford to the daughter of the Duke of Devonshire was a most celebrated event. It took place in the presence of a large number of guests.

THE MARRIAGE OF THE MARQUESS OF WATERFORD.

The marriage of the Marquis of Waterford to the daughter of the Duke of Devonshire was a most celebrated event. It took place in the presence of a large number of guests.

PIERCE'S NEW PATENT.



PIERCE'S NEW PATENT.

Pierce's New Patent is a most valuable invention. It is a pump or engine that is used in agriculture and industry. It is very efficient and durable.

PIERCE'S NEW PATENT.

Pierce's New Patent is a most valuable invention. It is a pump or engine that is used in agriculture and industry. It is very efficient and durable.

PIERCE'S NEW PATENT.

Pierce's New Patent is a most valuable invention. It is a pump or engine that is used in agriculture and industry. It is very efficient and durable.

PIERCE'S NEW PATENT.

Pierce's New Patent is a most valuable invention. It is a pump or engine that is used in agriculture and industry. It is very efficient and durable.

PIERCE'S NEW PATENT.

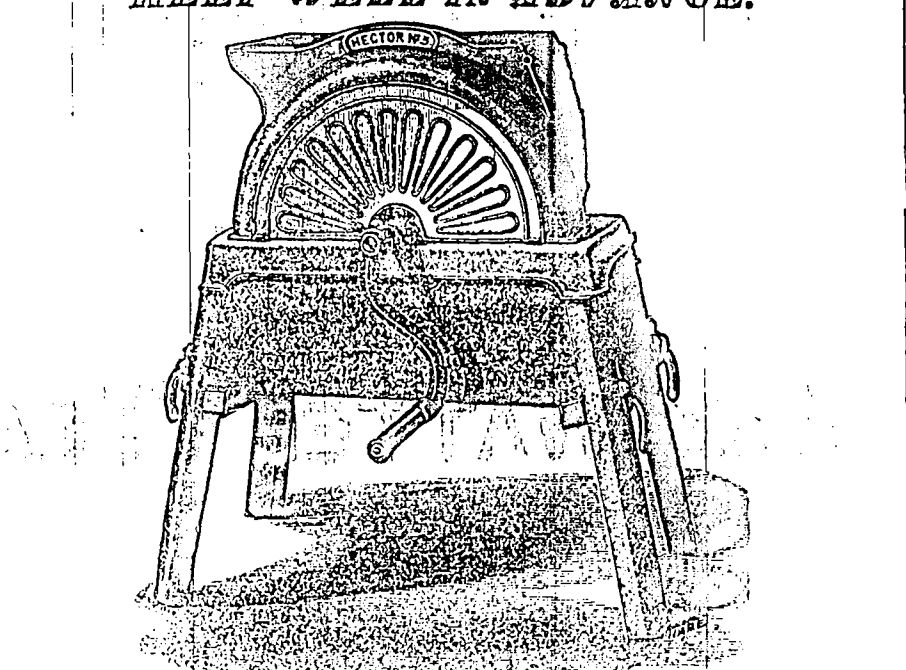
Pierce's New Patent is a most valuable invention. It is a pump or engine that is used in agriculture and industry. It is very efficient and durable.

PIERCE'S NEW PATENT.

Pierce's New Patent is a most valuable invention. It is a pump or engine that is used in agriculture and industry. It is very efficient and durable.

Agricultural Economy Everywhere.

It is an admitted fact that beasts waste less food, thrive best, or milk more on prepared Food, Turnips, Mangold, Hay or Straw.



PIERCE'S NEW PATENT.

Pierce's New Patent is a most valuable invention. It is a pump or engine that is used in agriculture and industry. It is very efficient and durable.

PIERCE'S NEW PATENT.

Pierce's New Patent is a most valuable invention. It is a pump or engine that is used in agriculture and industry. It is very efficient and durable.

PIERCE'S NEW PATENT.

Pierce's New Patent is a most valuable invention. It is a pump or engine that is used in agriculture and industry. It is very efficient and durable.

PIERCE'S NEW PATENT.

Pierce's New Patent is a most valuable invention. It is a pump or engine that is used in agriculture and industry. It is very efficient and durable.

PIERCE'S NEW PATENT.

Pierce's New Patent is a most valuable invention. It is a pump or engine that is used in agriculture and industry. It is very efficient and durable.

PIERCE'S NEW PATENT.

Pierce's New Patent is a most valuable invention. It is a pump or engine that is used in agriculture and industry. It is very efficient and durable.

GRASP THE IMPORTANCE!

OF THIS TO EVERY Thrifty, Careful Housewife, OUR PURE 2-INDIAN TEA

Rich, Refreshing, Invigorating. We give a Discount or Present worth 6d. with every pound of Tea to all purchasers.

OTHER PRICE TEAS, 1/3, 1/10, 2/2, 2/6. PRESENTS—We give everything required for Household Use. It is impossible to mention all here, but a Complete List can be had at any of our Branches.

Look at our Prices for Jams and Marmalade.

Table listing prices for various jams and marmalades. Items include 2 lb Jar Marmalade, Plum and apple Jam, Gooseberry and Apple Jam, etc.

Pound of Good Pale Soap for ONE PENNY.

Best Tallow Soap, 2 1/2 lb or 3 lb Bar for 7d. 3 lb Packet Wax Candles, 10d per Packet.

Every Article we sell is the best of its kind, at the Lowest Possible Price.

Mr Grand Christmas Picture, 'GOOD-BYE' Picture Tickets now being given out

LONDON & NEWCASTLE TEA CO.

LOCAL BRANCHES: WATERFORD—A. Broad-Street. LKenny—25, High-Street. CARLOW—4, Castle-Street.

WINDS TO CRAB OR BARR AT THE SHIP HOTEL QUAY.

BREAKFASTS, DINNERS, SUPPERS, AND LUNCHEONS. On the Shortest Notice, of the Best Description and at MODERATE CHARGES.

WHISKIES RIPE AND MELLOW AS MILK—TRY THEM. MICHAEL WALLACE, Proprietor, WATERFORD.

THE MOST NUTRITIOUS COCOA

EPP'S COCOA

GRATEFUL-COMFORTING. WITH FULL NATURAL FLAVOUR. SOLOMONS' SPECTACLES

10, NASSAU STREET, DUBLIN. From late Most Rev. Dr. O'BRIEN, Bishop of Waterford.

I have used Mr. Solomon's Spectacles with great advantage for many years. They are the best I have ever worn.

Very truly yours, F. O'BRIEN, Bishop of Waterford.

Very truly yours, F. O'BRIEN, Bishop of Waterford.

Very truly yours, F. O'BRIEN, Bishop of Waterford.

Very truly yours, F. O'BRIEN, Bishop of Waterford.

Very truly yours, F. O'BRIEN, Bishop of Waterford.

Very truly yours, F. O'BRIEN, Bishop of Waterford.

Very truly yours, F. O'BRIEN, Bishop of Waterford.

Very truly yours, F. O'BRIEN, Bishop of Waterford.

Very truly yours, F. O'BRIEN, Bishop of Waterford.

Very truly yours, F. O'BRIEN, Bishop of Waterford.

Very truly yours, F. O'BRIEN, Bishop of Waterford.

Very truly yours, F. O'BRIEN, Bishop of Waterford.

Very truly yours, F. O'BRIEN, Bishop of Waterford.

Very truly yours, F. O'BRIEN, Bishop of Waterford.

Very truly yours, F. O'BRIEN, Bishop of Waterford.

Very truly yours, F. O'BRIEN, Bishop of Waterford.

Very truly yours, F. O'BRIEN, Bishop of Waterford.

Very truly yours, F. O'BRIEN, Bishop of Waterford.

Very truly yours, F. O'BRIEN, Bishop of Waterford.

SILVER MEDAL, EDINBURGH, 1859.

GOLD MEDAL, JAMAICA, 1891. GOLD MEDAL, DERBY, 1891. ALTOGETHER 6 GOLD MEDALS RECEIVED AND HIGHEST AWARDS AT CHICAGO EXHIBITION

COLEMAN'S WINGARNIS

OR Liebig's Extract of Meat and Malt Wine.

Is a Delicious Beverage and Tonic made from Port Wine, Liebig's Extract of Meat, and Extract of Malt.

WINGARNIS

Is a New Name, Registered to prevent fraudulent imitations.

OVER FOUR THOUSAND

Unsolicited Testimonials have been received from Medical Men.

New Street, St. Neots, January 27th, 1896.

I have much pleasure in giving you my experience as to the 'Mead Malt Wine' received from you some time since, and in bearing testimony as to its value as a recuperative and restorative agent.

In the early part of last year my wife was seriously unwell, suffering from loss of flesh and appetite together with mental and bodily exhaustion.

The effect was marked, and convalescence commenced from that date; the appetite returned and the weight hourly increased, and in about two months the health was restored, and this result was in a great measure attributable to the use of 'Wingarnis'.

I feel certain that in many cases this preparation is most valuable adjunct to medical treatment.

T. POYNTE WRIGHT, Medical Officer of Health, St. Neots.

WINGARNIS

Sold by all Druggists, Wine Merchants, and Patent Vendors. Ask for Coleman's 'WINGARNIS' or Liebig's Extract of Meat and Malt Wine, and that the word 'WINGARNIS' is on the label of the bottle.

Sold in Bottles, 2s. 9d. and 4s. 6d. everywhere.

COLEMAN'S PURE COGNAC

"GUARANTEED ABSOLUTELY PURE"

Can be obtained of all Grocers and Wine Merchants, and of the Manufacturers.

COLEMAN & CO., LTD.

NORWICH & LONDON

COLEMAN'S "GROWN IMPERIAL" INVALID STOUT

Price 2/6 per dozen bottles

Is a specially brewed stout from the finest malt and water, and is the only stout of the kind that is so pure and so healthy.

Numerous testimonials have been received from Medical Men.

It is recommended by the Medical Faculty as being the most nourishing stout obtainable.

COLEMAN'S "GROWN IMPERIAL" INVALID CHAMPAGNE

Is suitable for the Robust as well as the Invalid. It is a Sound & Wholesome, Fruity Wine.

Is sold by all Grocers and Wine Merchants.

Over 2,000 Testimonials have been received from Medical Men.

DEAR SIR—I have great pleasure in testifying to the efficacy of your "Invalid Champagne" submitted to me for trial by Mr. Crofting. I administered it to a child in a state of extreme collapse from a cold in the lungs and pleurisy. The result was marvellous. The smouldering embers of life seemed to once more glow in the flame, and an uninterrupted recovery ensued.

I have no hesitation in saying that your "Invalid Champagne" is possessed of powerful stimulating and invigorating qualities, and cannot fail to be appreciated in all cases of debility, from whatever cause arising.

I am, yours faithfully, H. CLAYTON FOX, M.D., F.R.C.S., F.R.S., F.R.C.P., F.R.C.O., F.R.C.S.D., F.R.C.S.E., F.R.C.S.N., F.R.C.S.M., F.R.C.S.A., F.R.C.S.I., F.R.C.S. (Edin.), F.R.C.S. (Glasg.), F.R.C.S. (Lond.), F.R.C.S. (Dubl.), F.R.C.S. (Irel.), F.R.C.S. (Scot.), F.R.C.S. (Wales), F.R.C.S. (York), F.R.C.S. (Lanc), F.R.C.S. (Derby), F.R.C.S. (Leic), F.R.C.S. (Not), F.R.C.S. (Sheff), F.R.C.S. (Birm), F.R.C.S. (Man), F.R.C.S. (Glasg), F.R.C.S. (Edin), F.R.C.S. (Lond), F.R.C.S. (Dubl), F.R.C.S. (Irel), F.R.C.S. (Scot), F.R.C.S. (Wales), F.R.C.S. (York), F.R.C.S. (Lanc), F.R.C.S. (Derby), F.R.C.S. (Leic), F.R.C.S. (Not), F.R.C.S. (Sheff), F.R.C.S. (Birm), F.R.C.S. (Man), F.R.C.S. (Glasg), F.R.C.S. (Edin), F.R.C.S. (Lond), F.R.C.S. (Dubl), F.R.C.S. (Irel), F.R.C.S. (Scot), F.R.C.S. (Wales), F.R.C.S. (York), F.R.C.S. (Lanc), F.R.C.S. (Derby), F.R.C.S. (Leic), F.R.C.S. (Not), F.R.C.S. (Sheff), F.R.C.S. (Birm), F.R.C.S. (Man), F.R.C.S. (Glasg), F.R.C.S. (Edin), F.R.C.S. (Lond), F.R.C.S. (Dubl), F.R.C.S. (Irel), F.R.C.S. (Scot), F.R.C.S. (Wales), F.R.C.S. (York), F.R.C.S. (Lanc), F.R.C.S. (Derby), F.R.C.S. (Leic), F.R.C.S. (Not), F.R.C.S. (Sheff), F.R.C.S. (Birm), F.R.C.S. (Man), F.R.C.S. (Glasg), F.R.C.S. (Edin), F.R.C.S. (Lond), F.R.C.S. (Dubl), F.R.C.S. (Irel), F.R.C.S. (Scot), F.R.C.S. (Wales), F.R.C.S. (York), F.R.C.S. (Lanc), F.R.C.S. (Derby), F.R.C.S. (Leic), F.R.C.S. (Not), F.R.C.S. (Sheff), F.R.C.S. (Birm), F.R.C.S. (Man), F.R.C.S. (Glasg), F.R.C.S. (Edin), F.R.C.S. (Lond), F.R.C.S. (Dubl), F.R.C.S. (Irel), F.R.C.S. (Scot), F.R.C.S. (Wales), F.R.C.S. (York), F.R.C.S. (Lanc), F.R.C.S. (Derby), F.R.C.S. (Leic), F.R.C.S. (Not), F.R.C.S. (Sheff), F.R.C.S. (Birm), F.R.C.S. (Man), F.R.C.S. (Glasg), F.R.C.S. (Edin), F.R.C.S. (Lond), F.R.C.S. (Dubl), F.R.C.S. (Irel), F.R.C.S. (Scot), F.R.C.S. (Wales), F.R.C.S. (York), F.R.C.S. (Lanc), F.R.C.S. (Derby), F.R.C.S. (Leic), F.R.C.S. (Not), F.R.C.S. (Sheff), F.R.C.S. (Birm), F.R.C.S. (Man), F.R.C.S. (Glasg), F.R.C.S. (Edin), F.R.C.S. (Lond), F.R.C.S. (Dubl), F.R.C.S. (Irel), F.R.C.S. (Scot), F.R.C.S. (Wales), F.R.C.S. (York), F.R.C.S. (Lanc), F.R.C.S. (Derby), F.R.C.S. (Leic), F.R.C.S. (Not), F.R.C.S. (Sheff), F.R.C.S. (Birm), F.R.C.S. (Man), F.R.C.S. (Glasg), F.R.C.S. (Edin), F.R.C.S. (Lond), F.R.C.S. (Dubl), F.R.C.S. (Irel), F.R.C.S. (Scot), F.R.C.S. (Wales), F.R.C.S. (York), F.R.C.S. (Lanc), F.R.C.S. (Derby), F.R.C.S. (Leic), F.R.C.S. (Not), F.R.C.S. (Sheff), F.R.C.S. (Birm), F.R.C.S. (Man), F.R.C.S. (Glasg), F.R.C.S. (Edin), F.R.C.S. (Lond), F.R.C.S. (Dubl), F.R.C.S. (Irel), F.R.C.S. (Scot), F.R.C.S. (Wales), F.R.C.S. (York), F.R.C.S. (Lanc), F.R.C.S. (Derby), F.R.C.S. (Leic), F.R.C.S. (Not), F.R.C.S. (Sheff), F.R.C.S. (Birm), F.R.C.S. (Man), F.R.C.S. (Glasg), F.R.C.S. (Edin), F.R.C.S. (Lond), F.R.C.S. (Dubl), F.R.C.S. (Irel), F.R.C.S. (Scot), F.R.C.S. (Wales), F.R.C.S. (York), F.R.C.S. (Lanc), F.R.C.S. (Derby), F.R.C.S. (Leic), F.R.C.S. (Not), F.R.C.S. (Sheff), F.R.C.S. (Birm), F.R.C.S. (Man), F.R.C.S. (Glasg), F.R.C.S. (Edin), F.R.C.S. (Lond), F.R.C.S. (Dubl), F.R.C.S. (Irel), F.R.C.S. (Scot), F.R.C.S. (Wales), F.R.C.S. (York), F.R.C.S. (Lanc), F.R.C.S. (Derby), F.R.C.S. (Leic), F.R.C.S. (Not), F.R.C.S. (Sheff), F.R.C.S. (Birm), F.R.C.S. (Man), F.R.C.S. (Glasg), F.R.C.S. (Edin), F.R.C.S. (Lond), F.R.C.S. (Dubl), F.R.C.S. (Irel), F.R.C.S. (Scot), F.R.C.S. (Wales), F.R.C.S. (York), F.R.C.S. (Lanc), F.R.C.S. (Derby), F.R.C.S. (Leic), F.R.C.S. (Not), F.R.C.S. (Sheff), F.R.C.S. (Birm), F.R.C.S. (Man), F.R.C.S. (Glasg), F.R.C.S. (Edin), F.R.C.S. (Lond), F.R.C.S. (Dubl), F.R.C.S. (Irel), F.R.C.S. (Scot), F.R.C.S. (Wales), F.R.C.S. (York), F.R.C.S. (Lanc), F.R.C.S. (Derby), F.R.C.S. (Leic), F.R.C.S. (Not), F.R.C.S. (Sheff), F.R.C.S. (Birm), F.R.C.S. (Man), F.R.C.S. (Glasg), F.R.C.S. (Edin), F.R.C.S. (Lond), F.R.C.S. (Dubl), F.R.C.S. (Irel), F.R.C.S. (Scot), F.R.C.S. (Wales), F.R.C.S. (York), F.R.C.S. (Lanc), F.R.C.S. (Derby), F.R.C.S. (Leic), F.R.C.S. (Not), F.R.C.S. (Sheff), F.R.C.S. (Birm), F.R.C.S. (Man), F.R.C.S. (Glasg), F.R.C.S. (Edin), F.R.C.S. (Lond), F.R.C.S. (Dubl), F.R.C.S. (Irel), F.R.C.S. (Scot), F.R.C.S. (Wales), F.R.C.S. (York), F.R.C.S. (Lanc), F.R.C.S. (Derby), F.R.C.S. (Leic), F.R.C.S. (Not), F.R.C.S. (Sheff), F.R.C.S. (Birm), F.R.C.S. (Man), F.R.C.S. (Glasg), F.R.C.S. (Edin), F.R.C.S. (Lond), F.R.C.S. (Dubl), F.R.C.S. (Irel), F.R.C.S. (Scot), F.R.C.S. (Wales), F.R.C.S. (York), F.R.C.S. (Lanc), F.R.C.S. (Derby), F.R.C.S. (Leic), F.R.C.S. (Not), F.R.C.S. (Sheff), F.R.C.S. (Birm), F.R.C.S. (Man), F.R.C.S. (Glasg), F.R.C.S. (Edin), F.R.C.S. (Lond), F.R.C.S. (Dubl), F.R.C.S. (Irel), F.R.C.S. (Scot), F.R.C.S. (Wales), F.R.C.S. (York), F.R.C.S. (Lanc), F.R.C.S. (Derby), F.R.C.S. (Leic), F.R.C.S. (Not), F.R.C.S. (Sheff), F.R.C.S. (Birm), F.R.C.S. (Man), F.R.C.S. (Glasg), F.R.C.S. (Edin), F.R.C.S. (Lond), F.R.C.S. (Dubl), F.R.C.S. (Irel), F.R.C.S. (Scot), F.R.C.S. (Wales), F.R.C.S. (York), F.R.C.S. (Lanc), F.R.C.S. (Derby), F.R.C.S. (Leic), F.R.C.S. (Not), F.R.C.S. (Sheff), F.R.C.S. (Birm), F.R.C.S. (Man), F.R.C.S. (Glasg), F.R.C.S. (Edin), F.R.C.S. (Lond), F.R.C.S. (Dubl), F.R.C.S. (Irel), F.R.C.S. (Scot), F.R.C.S. (Wales), F.R.C.S. (York), F.R.C.S. (Lanc), F.R.C.S. (Derby), F.R.C.S. (Leic), F.R.C.S. (Not), F.R.C.S. (Sheff), F.R.C.S. (Birm), F.R.C.S. (Man), F.R.C.S. (Glasg), F.R.C.S. (Edin), F.R.C.S. (Lond), F.R.C.S. (Dubl), F.R.C.S. (Irel), F.R.C.S. (Scot), F.R.C.S. (Wales), F.R.C.S. (York), F.R.C.S. (Lanc), F.R.C.S. (Derby), F.R.C.S. (Leic), F.R.C.S. (Not), F.R.C.S. (Sheff), F.R.C.S. (Birm), F.R.C.S. (Man), F.R.C.S. (Glasg), F.R.C.S. (Edin), F.R.C.S. (Lond), F.R.C.S. (Dubl), F.R.C.S. (Irel), F.R.C.S. (Scot), F.R.C.S. (Wales), F.R.C.S. (York), F.R.C.S. (Lanc), F.R.C.S. (Derby), F.R.C.S. (Leic), F.R.C.S. (Not), F.R.C.S. (Sheff), F.R.C.S. (Birm), F.R.C.S. (Man), F.R.C.S. (Glasg), F.R.C.S. (Edin), F.R.C.S. (Lond), F.R.C.S. (Dubl), F.R.C.S. (Irel), F.R.C.S. (Scot), F.R.C.S. (Wales), F.R.C.S. (York), F.R.C.S. (Lanc), F.R.C.S. (Derby), F.R.C.S. (Leic), F.R.C.S. (Not), F.R.C.S. (Sheff), F.R.C.S. (Birm), F.R.C.S. (Man), F.R.C.S. (Glasg), F.R.C.S. (Edin), F.R.C.S. (Lond), F.R.C.S. (Dubl), F.R.C.S. (Irel), F.R.C.S. (Scot), F.R.C.S. (Wales), F.R.C.S. (York), F.R.C.S. (Lanc), F.R.C.S. (Derby), F.R.C.S. (Leic), F.R.C.S. (Not), F.R.C.S. (Sheff), F.R.C.S. (Birm), F.R.C.S. (Man), F.R.C.S. (Glasg), F.R.C.S. (Edin), F.R.C.S. (Lond), F.R.C.S. (Dubl), F.R.C.S. (Irel), F.R.C.S. (Scot), F.R.C.S. (Wales), F.R.C.S. (York), F.R.C.S. (Lanc), F.R.C.S. (Derby), F.R.C.S. (Leic), F.R.C.S. (Not), F.R.C.S. (Sheff), F.R.C.S. (Birm), F.R.C.S. (Man), F.R.C.S. (Glasg), F.R.C.S. (Edin), F.R.C.S. (Lond), F.R.C.S. (Dubl), F.R.C.S. (Irel), F.R.C.S. (Scot), F.R.C.S. (Wales), F.R.C.S. (York), F.R.C.S. (Lanc), F.R.C.S. (Derby), F.R.C.S. (Leic), F.R.C.S. (Not), F.R.C.S. (Sheff), F.R.C.S. (Birm), F.R.C.S. (Man), F.R.C.S. (Glasg), F.R.C.S. (Edin), F.R.C.S. (Lond), F.R.C.S. (Dubl), F.R.C.S. (Irel), F.R.C.S. (Scot), F.R.C.S. (Wales), F.R.C.S. (York), F.R.C.S. (Lanc), F.R.C.S. (Derby), F.R.C.S. (Leic), F.R.C.S. (Not), F.R.C.S. (Sheff), F.R.C.S. (Birm), F.R.C.S. (Man), F.R.C.S. (Glasg), F.R.C.S. (Edin), F.R.C.S. (Lond), F.R.C.S. (Dubl), F.R.C.S. (Irel), F.R.C.S. (Scot), F.R.C.S. (Wales), F.R.C.S. (York), F.R.C.S. (Lanc), F.R.C.S. (Derby), F.R.C.S. (Leic), F.R.C.S. (Not), F.R.C.S. (Sheff), F.R.C.S. (Birm), F.R.C.S. (Man), F.R.C.S. (Glasg), F.R.C.S. (Edin), F.R.C.S. (Lond), F.R.C.S. (Dubl), F.R.C.S. (Irel), F.R.C.S. (Scot), F.R.C.S. (Wales), F.R.C.S. (York), F.R.C.S. (Lanc), F.R.C.S. (Derby), F.R.C.S. (Leic), F.R.C.S. (Not), F.R.C.S. (Sheff), F.R.C.S. (Birm), F.R.C.S. (Man), F.R.C.S. (Glasg), F.R.C.S. (Edin), F.R.C.S. (Lond), F.R.C.S. (Dubl), F.R.C.S. (Irel), F.R.C.S. (Scot), F.R.C.S. (Wales), F.R.C.S. (York), F.R.C.S. (Lanc), F.R.C.S. (Derby), F.R.C.S. (Leic), F.R.C.S. (Not), F.R.C.S. (Sheff), F.R.C.S. (Birm), F.R.C.S. (Man), F.R.C.S. (Glasg), F.R.C.S. (Edin), F.R.C.S. (Lond), F.R.C.S. (Dubl), F.R.C.S. (Irel), F.R.C.S. (Scot), F.R.C.S. (Wales), F.R.C.S. (York), F.R.C.S. (Lanc), F.R.C.S. (Derby), F.R.C.S. (Leic), F.R.C.S. (Not), F.R.C.S. (Sheff), F.R.C.S. (Birm), F.R.C.S. (Man), F.R.C.S. (Glasg), F.R.C.S. (Edin), F.R.C.S. (Lond), F.R.C.S. (Dubl), F.R.C.S. (Irel), F.R.C.S. (Scot), F.R.C.S. (Wales), F.R.C.S. (York), F.R.C.S. (Lanc), F.R.C.S. (Derby), F.R.C.S. (Leic), F.R.C.S. (Not), F.R.C.S. (Sheff), F.R.C.S. (Birm), F.R.C.S. (Man), F.R.C.S. (Glasg), F.R.C.S. (Edin), F.R.C.S. (Lond), F.R.C.S. (Dubl), F.R.C.S. (Irel), F.R.C.S. (Scot), F.R.C.S. (Wales), F.R.C.S. (York), F.R.C.S. (Lanc), F.R.C.S. (Derby), F.R.C.S. (Leic), F.R.C.S. (Not), F.R.C.S. (Sheff), F.R.C.S. (Birm), F.R.C.S. (Man), F.R.C.S. (Glasg), F.R.C.S. (Edin), F.R.C.S. (Lond), F.R.C.S. (Dubl), F.R.C.S. (Irel), F.R.C.S. (Scot), F.R.C.S. (Wales), F.R.C.S. (York), F.R.C.S. (Lanc), F.R.C.S. (Derby), F.R.C.S. (Leic), F.R.C.S. (Not), F.R.C.S. (Sheff), F.R.C.S. (Birm), F.R.C.S. (Man), F.R.C.S. (Glasg), F.R.C.S. (Edin), F.R.C.S. (Lond), F.R.C.S. (Dubl), F.R.C.S. (Irel), F.R.C.S. (Scot), F.R.C.S. (Wales), F.R.C.S. (York), F.R.C.S. (Lanc), F.R.C.S. (Derby), F.R.C.S. (Leic), F.R.C.S. (Not), F.R.C.S. (Sheff), F.R.C.S. (Birm), F.R.C.S. (Man), F.R.C.S. (Glasg), F.R.C.S. (Edin), F.R.C.S. (Lond), F.R.C.S. (Dubl), F.R.C.S. (Irel), F.R.C.S. (Scot), F.R.C.S. (Wales), F.R.C.S. (York), F.R.C.S. (Lanc), F.R.C.S. (Derby), F.R.C.S. (Leic), F.R.C.S. (Not), F.R.C.S. (Sheff), F.R.C.S. (Birm), F.R.C.S. (Man), F.R.C.S. (Glasg), F.R.C.S. (Edin), F.R.C.S. (Lond), F.R.C.S. (Dubl), F.R.C.S. (Irel), F.R.C.S. (Scot), F.R.C.S. (Wales), F.R.C.S. (York), F.R.C.S. (Lanc), F.R.C.S. (Derby), F.R.C.S. (Leic), F.R.C.S. (Not), F.R.C.S. (Sheff), F.R.C.S. (Birm), F.R.C.S. (Man), F.R.C.S. (Glasg), F.R.C.S. (Edin), F.R.C.S. (Lond), F.R.C.S. (Dubl), F.R.C.S. (Irel), F.R.C.S. (Scot), F.R.C.S. (Wales), F.R.C.S. (York), F.R.C.S. (Lanc), F.R.C.S. (Derby), F.R.C.S. (Leic), F.R.C.S. (Not), F.R.C.S. (Sheff), F.R.C.S. (Birm), F.R.C.S. (Man), F.R.C.S. (Glasg), F.R.C.S. (Edin), F.R.C.S. (Lond), F.R.C.S. (Dubl), F.R.C.S. (Irel), F.R.C.S. (Scot), F.R.C.S. (Wales), F.R.C.S. (York), F.R.C.S. (Lanc), F.R.C.S. (Derby), F.R.C.S. (Leic), F.R.C.S. (Not), F.R.C.S. (Sheff), F.R.C.S. (Birm), F.R.C.S. (Man), F.R.C.S. (Glasg), F.R.C.S. (Edin), F.R.C.S. (Lond), F.R.C.S. (Dubl), F.R.C.S. (Irel), F.R.C.S. (Scot), F.R.C.S. (Wales), F.R.C.S. (York), F.R.C.S. (Lanc), F.R.C.S. (Derby), F.R.C.S. (Leic), F.R.C.S. (Not), F.R.C.S. (Sheff), F.R.C.S. (Birm), F.R.C.S. (Man), F.R.C.S. (Glasg), F.R.C.S. (Edin), F.R.C.S. (Lond), F.R.C.S. (Dubl), F.R.C.S. (Irel), F.R.C.S. (Scot), F.R.C.S. (Wales), F.R.C.S. (York), F.R.C.S. (Lanc), F.R.C.S. (Derby), F.R.C.S. (Leic), F.R.C.S. (Not), F.R.C.S. (Sheff), F.R.C.S. (Birm), F.R.C.S. (Man), F.R.C.S. (Glasg), F.R.C.S. (Edin), F.R.C.S. (Lond), F.R.C.S. (Dubl), F.R.C.S. (Irel), F.R.C.S. (Scot), F.R.C.S. (Wales), F.R.C.S. (York), F.R.C.S. (Lanc), F.R.C.S. (Derby), F.R.C.S. (Leic), F.R.C.S. (Not), F.R.C.S. (Sheff), F.R.C.S. (Birm), F.R.C.S. (Man), F.R.C.S. (Glasg), F.R.C.S. (Edin), F.R.C.S. (Lond), F.R.C.S. (Dubl), F.R.C.S. (Irel), F.R.C.S. (Scot), F.R.C.S. (Wales), F.R.C.S. (York), F.R.C.S. (Lanc), F.R.C.S. (Derby), F.R.C.S. (Leic), F.R.C.S. (Not), F.R.C.S. (Sheff), F.R.C.S. (Birm), F.R.C.S. (Man), F.R.C.S. (Glasg), F.R.C.S. (Edin), F.R.C.S. (Lond), F.R.C.S. (Dubl), F.R.C.S. (Irel), F.R.C.S. (Scot), F.R.C.S. (Wales), F.R.C.S. (York), F.R.C.S. (Lanc), F.R.C.S. (Derby), F.R.C.S. (Leic), F.R.C.S. (Not), F.R.C.S. (Sheff), F.R.C.S. (Birm), F.R.C.S. (Man), F.R.C.S. (Glasg), F.R.C.S. (Edin), F.R.C.S. (Lond), F.R.C.S. (Dubl), F.R.C.S. (Irel), F.R.C.S. (Scot), F.R.C



Stock & Share Price List table with columns for various stocks and their prices.

JAMES WHITTY, STOCK & SHARE BROKER, 42, Quay, Waterford. Includes 'The Waterford News' logo and 'CITY EDITION' text.

WHITTLE'S SEEDS AND MANURES. THE BEST THAT CAN BE HAD FOR MONEY. Splendid Manure for Top-Dressing.

NOTICE TO SHIPPERS. Alteration of Sailings. In order to meet the convenience of Shippers during the Christmas Holidays.

THE WATERFORD NEWS. SATURDAY, DECEMBER 19, 1896. OUR PAPER. THE NEWS THIS WEEK IS THE LARGEST, AND WE HOPE OUR READERS WILL THINK IT THE BEST PAPER EVER PUBLISHED IN THE PROVINCE OF IRELAND.

THE ROBBERY OF IRELAND. Right heartily do we congratulate Lord Castletown on the patriotic and remarkable address which he delivered at Cork on Saturday last.

PROCEEDINGS AT THE CITY PETTY SESSIONS—THIS DAY. The presiding magistrates in this court today were—Ald W. J. Smith, Mayor, Mr. John Ryan, Ald J. Ryan, Mr. Ulick Burke, B.M., and Ald Richard P. O'Connell.

MR REDMOND'S RECEPTION. We are enabled through the thoughtful courtesy of Mr J. J. Daly, New York, and other friends to give in this evening's issue the views of every one of importance published in New York with reference to Mr John Redmond's last visit to that great city.

THE ROBBERY OF IRELAND (continued). country, and try to retain their people in the land of their birth. The concluding portion of Lord Castletown's speech was the most remarkable uttered by a gentleman holding such a high and responsible position, since the early days of the century.

THE ROBBERY OF IRELAND (continued). The average annual death rate in the County of Kerry is 22 per 1,000 of the population. This is a very high rate, and is due to various causes.

THE ROBBERY OF IRELAND (continued). The average annual death rate in the County of Kerry is 22 per 1,000 of the population. This is a very high rate, and is due to various causes.

THE ROBBERY OF IRELAND (continued). The average annual death rate in the County of Kerry is 22 per 1,000 of the population. This is a very high rate, and is due to various causes.

THE ROBBERY OF IRELAND (continued). The average annual death rate in the County of Kerry is 22 per 1,000 of the population. This is a very high rate, and is due to various causes.

THE ROBBERY OF IRELAND (continued). The average annual death rate in the County of Kerry is 22 per 1,000 of the population. This is a very high rate, and is due to various causes.

THE ROBBERY OF IRELAND (continued). The average annual death rate in the County of Kerry is 22 per 1,000 of the population. This is a very high rate, and is due to various causes.

THE ROBBERY OF IRELAND (continued). The average annual death rate in the County of Kerry is 22 per 1,000 of the population. This is a very high rate, and is due to various causes.

THE ROBBERY OF IRELAND (continued). The average annual death rate in the County of Kerry is 22 per 1,000 of the population. This is a very high rate, and is due to various causes.

THE ROBBERY OF IRELAND (continued). The average annual death rate in the County of Kerry is 22 per 1,000 of the population. This is a very high rate, and is due to various causes.

THE ROBBERY OF IRELAND (continued). The average annual death rate in the County of Kerry is 22 per 1,000 of the population. This is a very high rate, and is due to various causes.

THE ROBBERY OF IRELAND (continued). The average annual death rate in the County of Kerry is 22 per 1,000 of the population. This is a very high rate, and is due to various causes.

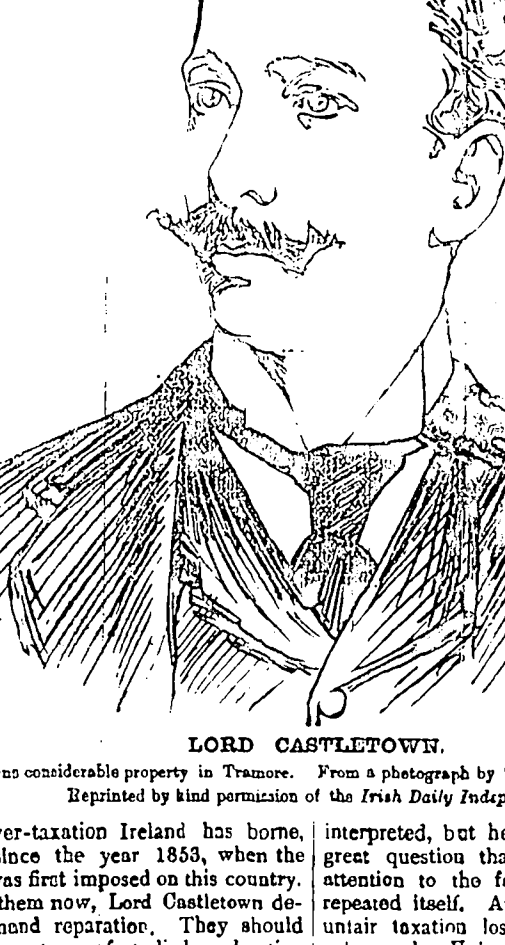
CYCLING, ROWING, RACING. St. Stephen's Day—Sweep Races. The water polo team from the new firm.

CYCLING, ROWING, RACING (continued). The water polo team from the new firm. The water polo team from the new firm.

CYCLING, ROWING, RACING (continued). The water polo team from the new firm. The water polo team from the new firm.

CYCLING, ROWING, RACING (continued). The water polo team from the new firm. The water polo team from the new firm.

CYCLING, ROWING, RACING (continued). The water polo team from the new firm. The water polo team from the new firm.



LORD CASTLETOWN. Who owns considerable property in Kerry. From a photograph by Warner & Sons, Dublin.

THE ROBBERY OF IRELAND (continued). The average annual death rate in the County of Kerry is 22 per 1,000 of the population. This is a very high rate, and is due to various causes.

THE ROBBERY OF IRELAND (continued). The average annual death rate in the County of Kerry is 22 per 1,000 of the population. This is a very high rate, and is due to various causes.

THE ROBBERY OF IRELAND (continued). The average annual death rate in the County of Kerry is 22 per 1,000 of the population. This is a very high rate, and is due to various causes.

THE ROBBERY OF IRELAND (continued). The average annual death rate in the County of Kerry is 22 per 1,000 of the population. This is a very high rate, and is due to various causes.

THE ROBBERY OF IRELAND (continued). The average annual death rate in the County of Kerry is 22 per 1,000 of the population. This is a very high rate, and is due to various causes.

THE ROBBERY OF IRELAND (continued). The average annual death rate in the County of Kerry is 22 per 1,000 of the population. This is a very high rate, and is due to various causes.



Close of a Retreat at Mount Sion. MOST INTERESTING ADDRESS BY THE LORD BISHOP.

(SPECIAL REPORT FOR THE NEWS.) On Sunday evening the annual Retreat of the members of the Sodality of Mount Sion...

THE BISHOP'S ADDRESS. The Bishop's address was a most interesting and instructive one. He dealt with the subject of the retreat and the importance of the spiritual life...

TO DARKEN SPIRITUAL DARKNESS. The Bishop's address was a most interesting and instructive one. He dealt with the subject of the retreat and the importance of the spiritual life...

TO DARKEN SPIRITUAL DARKNESS. The Bishop's address was a most interesting and instructive one. He dealt with the subject of the retreat and the importance of the spiritual life...

TO DARKEN SPIRITUAL DARKNESS. The Bishop's address was a most interesting and instructive one. He dealt with the subject of the retreat and the importance of the spiritual life...

TO DARKEN SPIRITUAL DARKNESS. The Bishop's address was a most interesting and instructive one. He dealt with the subject of the retreat and the importance of the spiritual life...

LET THE PAST BE FORGOTTEN. except in a general way and look forward hopefully to the future.

LET THE PAST BE FORGOTTEN. except in a general way and look forward hopefully to the future. No doubt it is a good thing to sometimes reflect on the past...

LET THE PAST BE FORGOTTEN. except in a general way and look forward hopefully to the future. No doubt it is a good thing to sometimes reflect on the past...

LET THE PAST BE FORGOTTEN. except in a general way and look forward hopefully to the future. No doubt it is a good thing to sometimes reflect on the past...

LET THE PAST BE FORGOTTEN. except in a general way and look forward hopefully to the future. No doubt it is a good thing to sometimes reflect on the past...

LET THE PAST BE FORGOTTEN. except in a general way and look forward hopefully to the future. No doubt it is a good thing to sometimes reflect on the past...

LET THE PAST BE FORGOTTEN. except in a general way and look forward hopefully to the future. No doubt it is a good thing to sometimes reflect on the past...

LIPTON'S DELICIOUS TEAS. Enormous Demand. There can be no surer sign of popularity than the enormous demand all over the country for Lipton's Delicious Teas.

LIPTON'S DELICIOUS TEAS. Millions Drink them Daily. It is computed that millions of people must daily be drinking and enjoying these delicious Teas.

LIPTON'S DELICIOUS TEAS. Largest Sale in the World. It is beyond doubt that Lipton's Delicious Teas have no rival for the above title.

LIPTON CONTROLS THE TEA MARKET. Lipton has paid in duty for his week's clearance of Tea, the largest sum ever received by Her Majesty's Customs, London.

LIPTON, TEA MERCHANT BY SPECIAL APPOINTMENT TO HER MAJESTY THE QUEEN. The Reason Why. The reason why Lipton's Teas have such a hold on the Public is easily explained in a few words.

LIPTON'S DELICIOUS TEAS. No Higher Price PER 1/7 LB. No Higher Price PER 1/4 LB. The Finest Tea the World can Produce.

LIPTON'S DELICIOUS TEAS. Sunny Ceylon. Visitors to this beautiful Island are cordially invited to call and see over Lipton's Tea and Coffee Warehouses.

LIPTON, Tea, Coffee and Cocoa Planter, Ceylon. The Largest Tea, Coffee and Provision Dealer in the World. Waterford Branch—5, Broad Street.

EXTENSION OF PREMISES. MICHAEL SULLIVAN, Urbs Intacta Mineral Water Factory. BOTTLING STORES, HIGH STREET, WATERFORD.

M. SULLIVAN, High Street and Barronstrand Street, Waterford. MONEY. MONEY. MONEY. THE WATERFORD LOAN COMPANY.

ASK FOR PATRICK KELLY & SONS' WATERFORD ALES, In BOTTLE and on DRAUGHT. St. Stephen's Brewery.

GAMAGE FOOTBALL OUTFITS. LEADING THE WAY AS USUAL CHEAPEST AND BEST HOUSE. THE "HOLBORN" FOOTBALL CHIRTS.

A. W. GAMAGE, 110, 126, 127, 129, HOLBORN, LONDON, E.C. COLEMAN'S WINCARNIS. EDWARD O'SHEA, Monumental & Architectural Sculptor.

WINCARNIS. OVERT FOUR THOUSAND. EDWARD O'SHEA, Sculptor. BIRKBECK BUILDING SOCIETY.

POOR MAN'S FRIEND. BIRKBECK BUILDING SOCIETY. BIRKBECK BUILDING SOCIETY. BIRKBECK BUILDING SOCIETY.

WHOLESALE AND RETAIL. Fish, Game, Poultry, and Ice Stores. BEAU-STREET, WATERFORD.

JAMES BARRY, GENERAL SMITH, ANNE STREET, WATERFORD. ALL KINDS OF SMITH WORK DONE ON THE PREMISES.

Walkers Sugar Cattle Food. R. AD THIS! PLAIN FACTS. Mr. B. R. TATLOCK, F.R.S.E., F.A.O., F.C.I.

PIANOS HARMONIUMS AMERICAN ORGAN. 3 Years System. ILLUSTRATED TRADE MARK.

PIGOTT & CO., 112 GRAFTON STREET and 11 & 19 SUBFOLK ST., DUBLIN. THE PATRIOTIC ASSURANCE COMPANY.

Marble & Stone Works. MICHAEL STREET, WATERFORD. P. O'KEEFFE & SONS. Call special attention to their large Stock of Headstones, Tombs and Monuments.

WATERFORD SAVINGS BANK. POORWELL STREET. ESTABLISHED 1816. WATERFORD SAVINGS BANK.

BIRKBECK BUILDING SOCIETY. BIRKBECK BUILDING SOCIETY. BIRKBECK BUILDING SOCIETY. BIRKBECK BUILDING SOCIETY.